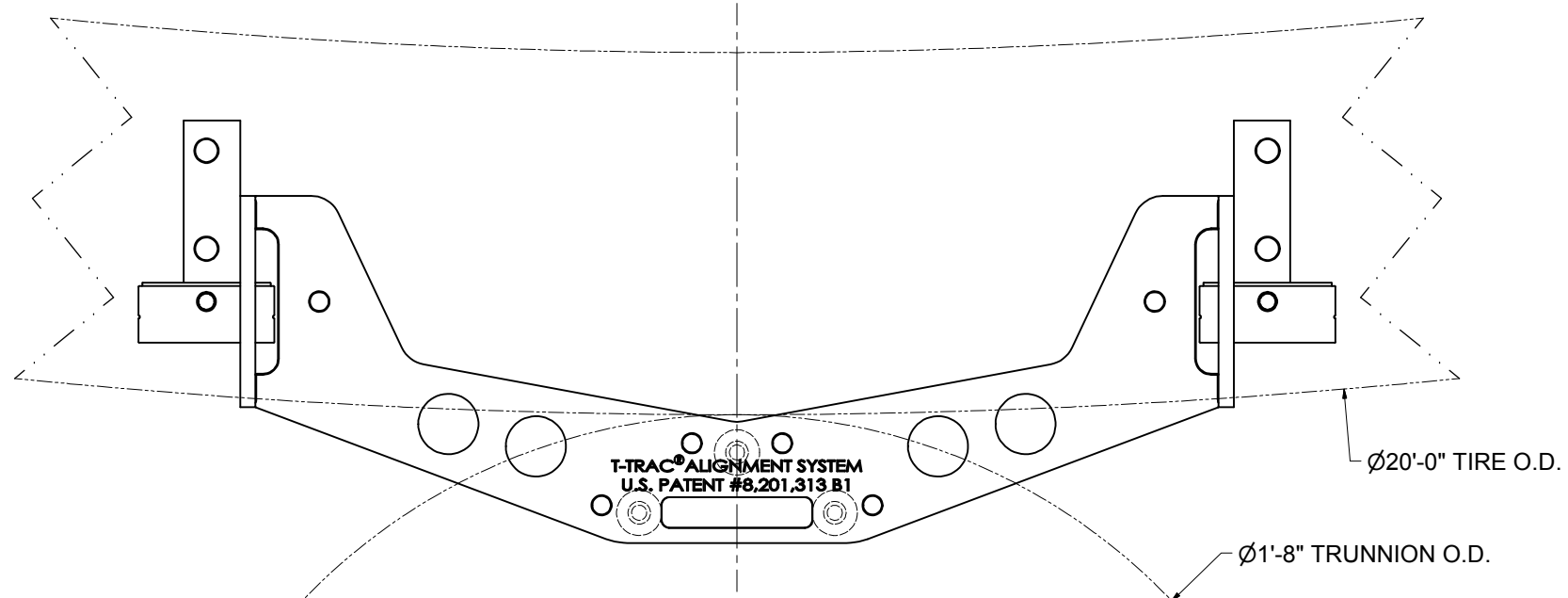


4

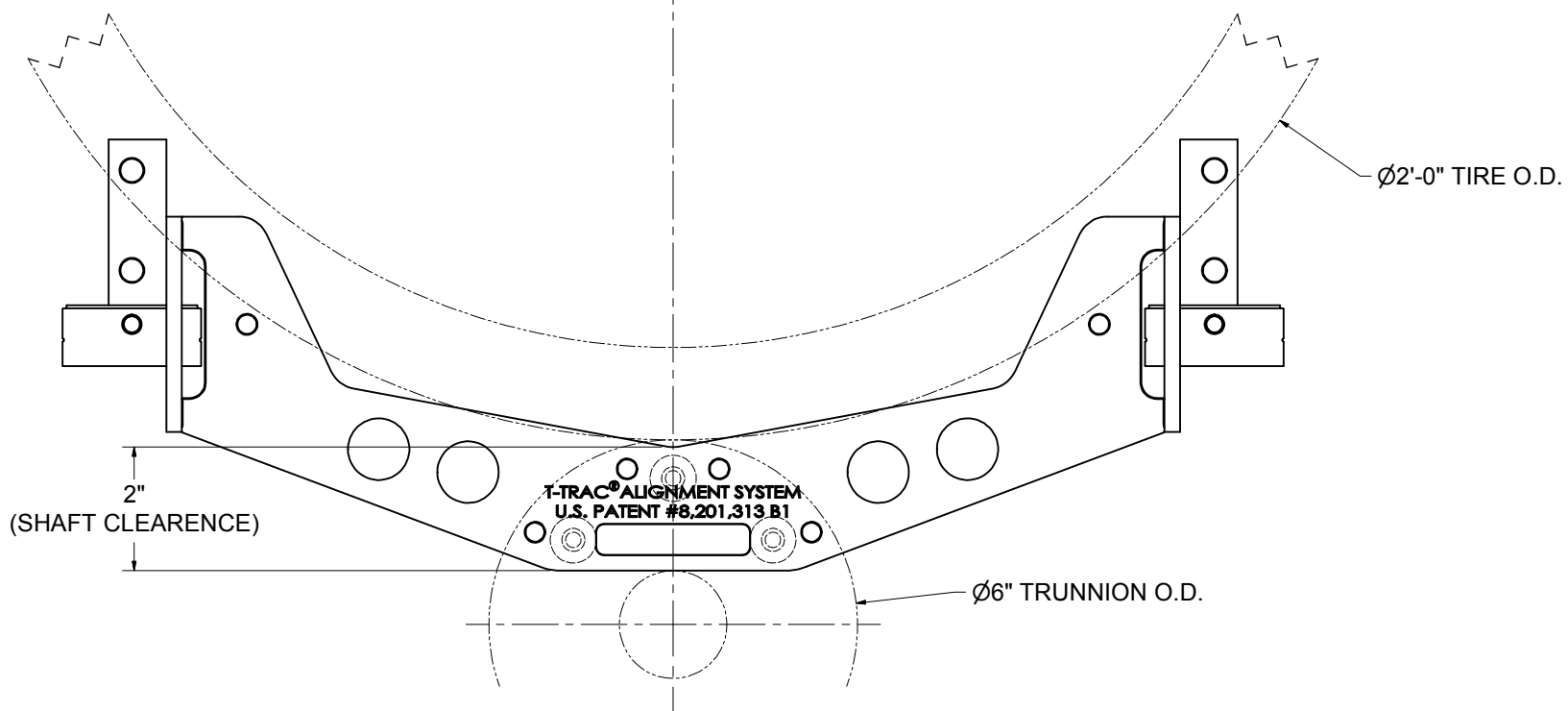
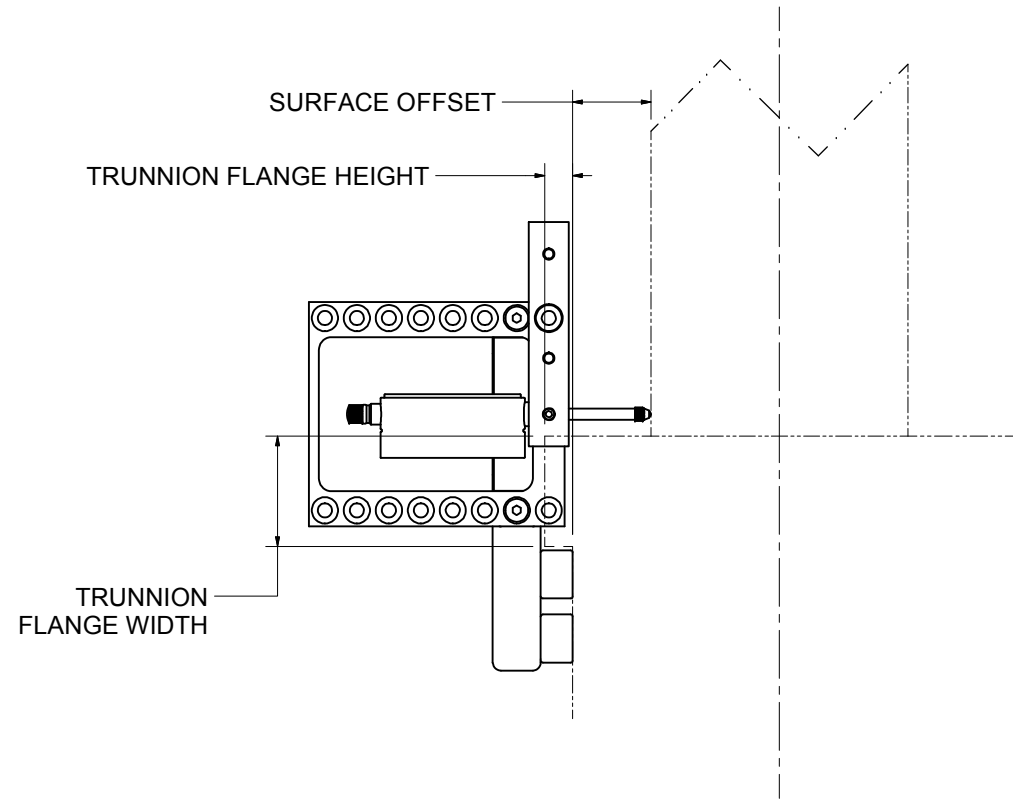
3

2

1



**VIEW "A"**  
LARGE TIRE & TRUNNION



**VIEW "B"**  
SMALL TIRE & TRUNNION

**ALIGNMENT TOOL LIMITS**

(MIN / MAX)


- TIRE O.D. = 36" / UNLIMITED
- TRUNNION O.D. = 6"\* / UNLIMITED
- SURFACE OFFSET = 0" / 4"
- TRUNNION FLANGE HEIGHT = 0" / 7/16"
- TRUNNION FLANGE WIDTH = 0" / 1 3/4"

\*THE TRUNNION O.D. MINIMUM IS RELATIVE TO THE SIZE OF THE TRUNNION SHAFT. A CLEARANCE OF 2" IS REQUIRED TO PROPERLY MOUNT THE T-TRAC 2.0 TO THE TRUNNION.

*TOLERANCES UNLESS OTHERWISE NOTED*

WHOLE NUMBER DIM.	±1/16"	ANGULAR DIM.	±1/2°
FRACTIONAL DIM.	±1/16"	DECIMAL DIM. (x.xx)	±0.010
		DECIMAL DIM. (x.xxx)	±0.005

**NOTICE:** THE INFORMATION CONTAINED HEREIN IS PROPRIETARY TO INDUSTRIAL KILN & DRYER GROUP AND SHALL NOT BE REPRODUCED OR DISCLOSED IN WHOLE OR IN PART, NOR USED FOR ANY DESIGN OR MANUFACTURING PURPOSE UNLESS AUTHORIZED IN WRITING BY INDUSTRIAL KILN & DRYER GROUP.

CUSTOMER	STANDARD		
TITLE	T-TRAC PRECISION BEAM ALIGNMENT SYSTEM RANGE		
	INDUSTRIAL KILN & DRYER 12711 TOWNEPARK WAY LOUISVILLE, KY 40219-1804 USA3 TELEPHONE (502) 969-3535 FAX (502) 969-9028		
	DWG. BY:	NRH	DATE:
CHK. BY:	-	DATE:	
APPROVED BY:	-	DATE:	
SCALE:	NONE	SHEET #:	13 OF 13
DRAWING NO.	T-TRAC 2.0-01-A1		

NEXT DWG'S.

4

3

2

1